

Est. 1947

# tomkinsdavis

[www.tomkinsdavis.co.uk](http://www.tomkinsdavis.co.uk)



## **Gibson House, Stanwell Village Middlesex TW19 7JR**

**£1,180 Per Month**

**EPC Current Band: C**

DEPOSIT ALTERNATIVE AVAILABLE

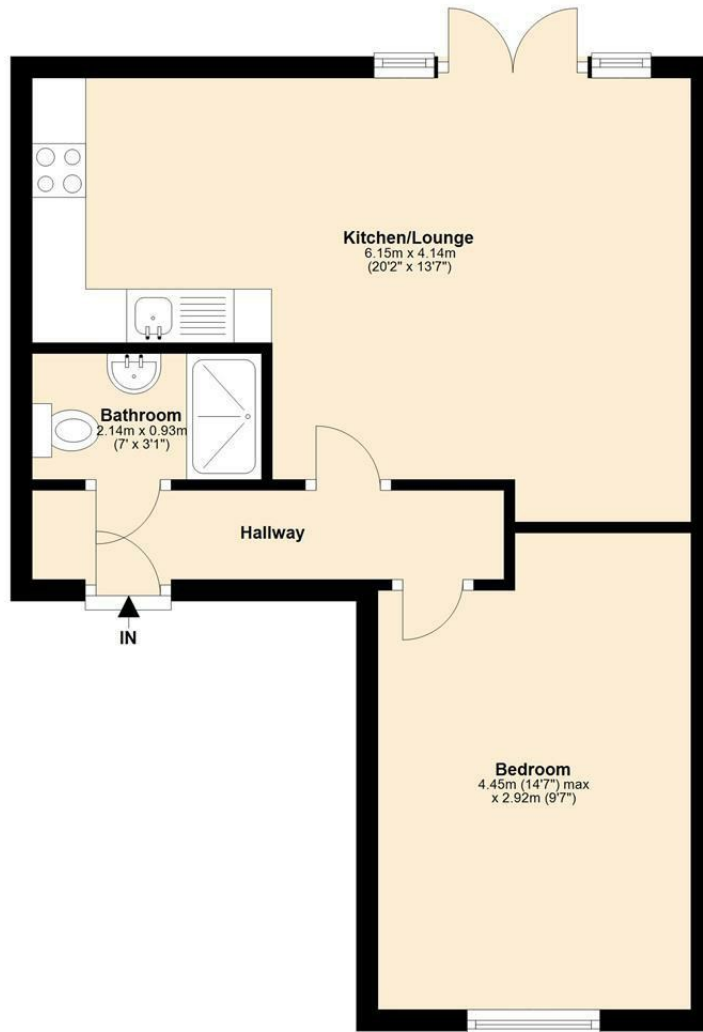
We are pleased to offer this well presented one bed ground floor flat which benefits double glazed windows and gas central heating. The property also offers fully fitted kitchen with dishwasher, modern bathroom suite, large open plan lounge, communal gardens and allocated parking. The property is located in Stanwell village, close to local shops and is within easy access to Heathrow airport and the M25 motorway. Suitable for professional single or couple.

COUNCIL TAX: Band B

HOLDING RETAINER (equivalent to one weeks rental) £270



# Ground Floor



Energy Efficiency Rating		Current	Potential
Very energy efficient - lower running costs			
(92 plus) A			
(81-91) B			
(69-80) C			
(55-68) D			
(39-54) E			
(21-38) F			
(1-20) G			
Not energy efficient - higher running costs			
England & Wales		73	77
EU Directive 2002/91/EC			

Environmental Impact (CO <sub>2</sub> ) Rating		Current	Potential
Very environmentally friendly - lower CO <sub>2</sub> emissions			
(92 plus) A			
(81-91) B			
(69-80) C			
(55-68) D			
(39-54) E			
(21-38) F			
(1-20) G			
Not environmentally friendly - higher CO <sub>2</sub> emissions			
England & Wales		81	82
EU Directive 2002/91/EC			

Whilst every attempt has been made to ensure the accuracy of the floor plan contained here, measurements of doors, windows, rooms and other areas are approximate and no responsibility taken for any error, omission or mis-statement. This plan is for illustration purposes only and should be used as such by any prospective purchaser or advisor. Tomkins Davis have not tested any apparatus, equipment, fixtures and fittings or services therefore cannot verify that they are in good working order or fit for purpose. Neither have we checked any legal documentation to verify the leasehold or freehold status of the property and advise any purchaser to obtain verification from their solicitor or surveyor.